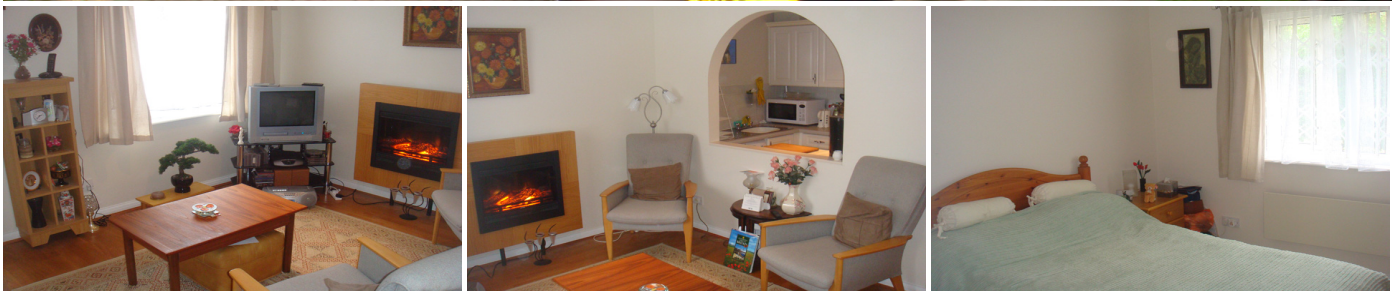


## 1 Bedroom Flat for Sale - £224,950

Dorset Mews, Finchley Central, London, N3 2BN



### KEY FEATURES:

- ONE BEDROOM APARTMENT • MODERN DEVELOPMENT • LOUNGE • MODERN FITTED KITCHEN • MODERN BATHROOM • OFF STREET PARKING • CLOSE TO FINCHLEY CENTRAL TUBE • CHAIN FREE!

## Description

One bedroom maisonette in modern development with lounge, modern fitted kitchen & bathroom, own off street parking, CHAIN FREE.

## Location

Situated in sought after development with private road, walking distance to Finchley Central tube, Victoria Park & shops.

## Ground Floor

**Hallway** - Double glazed front door, coving, French doors to...

**Lounge** - 13'8 x 12'6(max) Coving, ceiling spot lights, laminate wood floor, TV & Bt points, double glazed window to front, opening to...

**Kitchen** - 7'6 x 5'9 Wall and base level units, single drainer sink unit, electric hob, built-in electric hob, extractor hood, integrated fridge freezer, plumbed for washer dryer, part tiled.

**Inner hallway** - Electric heater, coving, built -in double storage cupboard, built-in cupboard housing hot water tank with storage space

**Bedroom** - 10'1 x 9'8 Coving, phone point, electric heater, double glazed window to rear.

**Bathroom** - Large double shower cubicle, low flush WC, wash hand basin in vanity unit, tiled walls, small wall heater, extractor fan.

**Exterior** - Allocated parking.