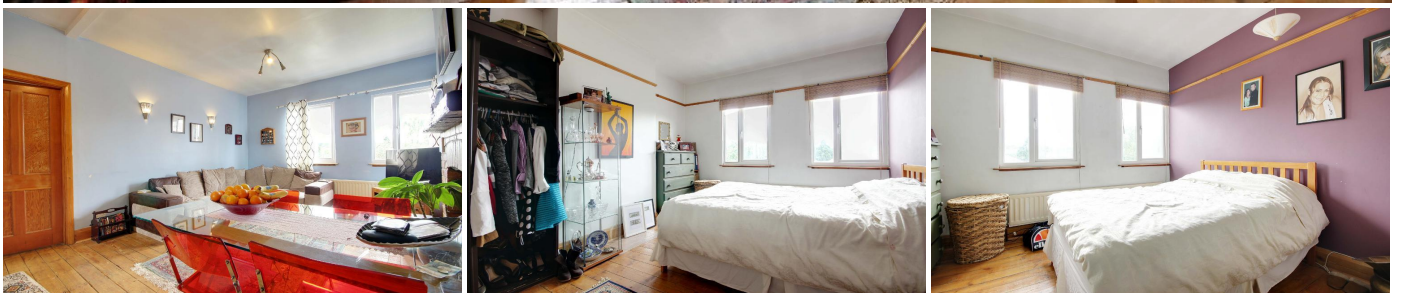


2 Bedroom Flat for Sale - £359,950

Sussex Ring, Woodside Park, London, N12 7HY



KEY FEATURES:

- TWO DOUBLE BEDROOMS • SPACIOUS LOUNGE • MODERN FITTED KITCHEN • MODERN BATHROOM •
- DOUBLE GLAZED • HARDWOOD FLOORING THROUGHOUT • SITUATED ABOVE SHOP • CHAIN FREE

Description

Reed & Co are pleased to offer this two double bedroom flat situated in the heart of Woodside Park and close to shopping, tube station, Frith Manor School and park, spacious lounge, modern fitted kitchen, modern bathroom, hardwood flooring throughout, double glazed, excellent condition, offered CHAIN FREE.

Energy Efficiency Rating		
	Current	Potential
Very energy efficient - lower running costs		
(92-100) A		
(81-91) B		
(69-80) C		
(55-68) D		
(39-54) E		
(21-38) F		
(1-20) G		
Not energy efficient - higher running costs		
	57	72
England & Wales		
EU Directive 2002/91/EC		

Environmental Impact (CO ₂) Rating		
	Current	Potential
Very environmentally friendly - lower CO ₂ emissions		
(92-100) A		
(81-91) B		
(69-80) C		
(55-68) D		
(39-54) E		
(21-38) F		
(1-20) G		
Not environmentally friendly - higher CO ₂ emissions		
	51	71
England & Wales		
EU Directive 2002/91/EC		





Approximate Gross Internal Area
72.6 sq m / 781 sq ft



Illustration For Identification Purposes Only. Not To Scale (ID:346862 / Ref:60859)